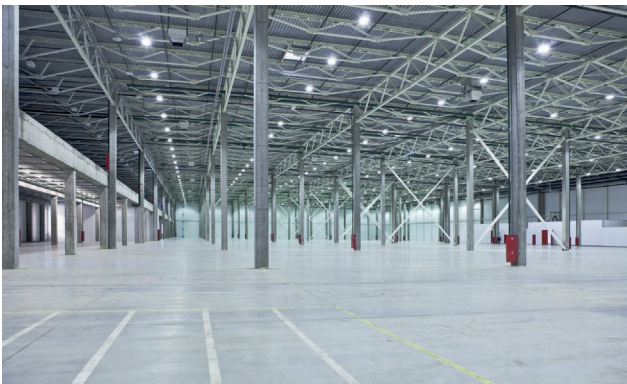


Industrial LED luminaires

HERACLES



Up to 90% savings in energy costs

100 W to 200 W power versions

Luminous flux control

Compatible with light and motion sensors

Reliable

Made in Poland



SOLUTIONS FOR:

Production halls,
high- and low-storage warehouses
and workshops

Maximum savings

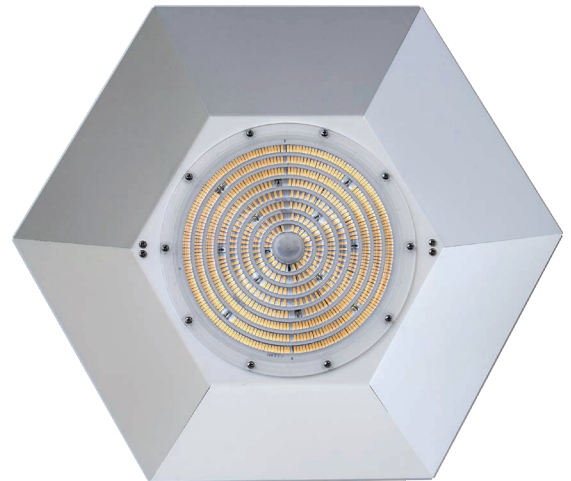
- High luminous efficacy of the luminaires thanks to cutting edge LED technology
- Compatible with reliable, technologically advanced automation systems
- Break-resistant luminaires, no glass elements in the housing.

User satisfaction and safety

- Manufactured in Poland, short turnaround Times
- Long-life operation guaranteed by high quality LEDs and efficient power supply heat dissipation
- Designed for long operating life
- 5 years warranty
- High Color Rendering Index Ra > 80
- Tested for high ambient temperatures and difficult conditions. IP65 certified luminaires for maximum protection
- Quality components, established manufacturers
- Flicker-free, steady light stream.

Convenience and comfort for installers and maintenance staff

- Professional technical support
- Simple and quick installation of the luminaire
- Less frequent technical inspections and cleaning.

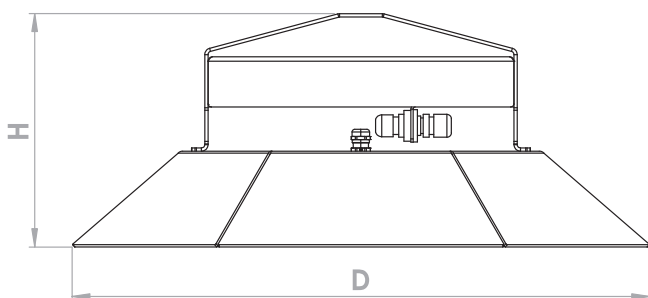




Technical specification

Source of light	LED diodes	Tightness class	IP65
Diode lifetime	L70 > 115 000 h (ta = 25°C)	Electrical insulation class	Class. I
Color temperature	4000 K (others available on request)	Power factor	cos Φ > 0,98
Color Rendering Index	Ra > 80	Power supply efficiency	η > 95%
Supply voltage	198 – 264 VAC	Brightness control	0-10 V, DALI (options)
Operating temperature (ta)	-25°C to +50°C (power <150W) -25°C to +45°C (power >150W)		

Dimensions and weight



	H)	D)	weight
Luminaire type	[mm]	[mm]	[kg]
HR1 – 100 b DZ...	214	527	3,8
HR1 – 140 b DZ...	214	527	3,8
HR1 – 200 b DZ...	214	527	3,8

Industrial LED luminaires

HERACLES

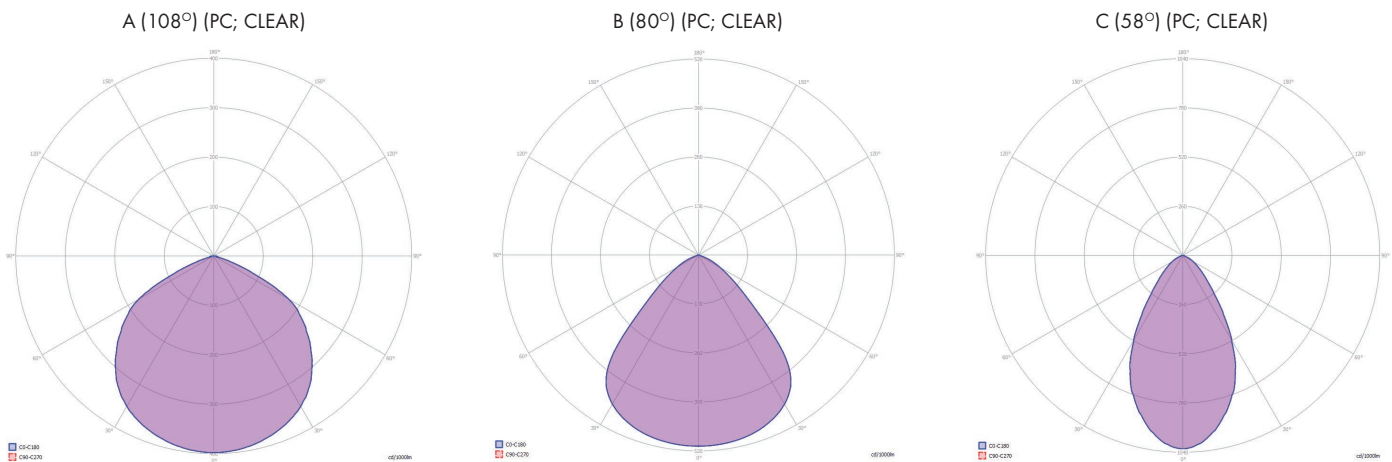
Luminaire power options

Luminaire type	HR1-100NDZ (100W)	HR1-140NDZ (140W)	HR1-200ZDZ (200W)
Luminous flux	18 000 lm	25 200 lm	34 800 lm
Equivalent of	MH 250W	Sodium 250W	MH 400W
Application	Main lighting in low halls	Main lighting in medium height halls	Main lighting in high halls

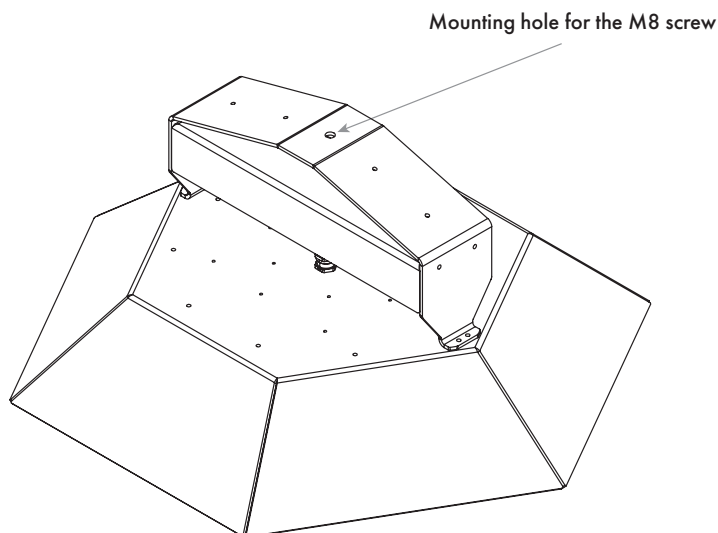
The above luminaire power and application recommendations are only indicative and apply to open halls. Actual luminaires are selected based on the specific lighting design.

Light distribution curve adjustment

Special optical design can be used to shape the light distribution curve to meet specific user requirements. Examples of light distribution curves for A, B and C optical systems:



Fast and easy installation



Coding of the Heracles luminaire

HR1 – PSP b LM – TC – O000

HR1 Product code – Heracles luminaire

PSP Power supply [W]:
100 – 100W
140 – 140W
200 – 200W

b Power supply control
N – No control
D – DALI
Z – 0-10 V

L Luminaire diameter
D – 527 mm

M Mounting type
Z – suspended, single-point

T Color temperature of light [K]
4 – 4000 K

C Color Rendering Index [CRI]
8 – Ra > 80

O Type of optics:
A – 115° transparent PC
B – 90° transparent PC
C – 60° transparent PC

Coding example

HR1 – 140 N DZ – 48 – B000

HR1 Heracles luminaire version: HR1
140 Power supply: 140 W
N No control
D Luminaire diameter: 527 mm
Z Suspended, single-point mounting type
- Power cord 1,5 m
4 Color temperature: 4000 K
8 CRI > 80
B000 Type of optics: 90° transparent PC

The technical specification is subject to change
220317V03

Industrial LED luminaires

HERACLES

   	HERACLES	 100-200 W	 52,7 cm  H = 21,4 cm		 4000 K	
	HR1 230 VAC	 115.000 h	 3.8 kg	 IP 65	 80	
	  	 .. 180 lm/W	 DALI, 0-10V, NS	 IK 08	 -25° .. +50°C	

Company address

TheusLED „TNC INVESTMENTS” Sp. z o.o. Sp. k.
ul. Wałowska 19A, 02-451 Warszawa

Sales and Production

ul. Grabskiego 22, 55-011 Siechnice

E-mail

office@theusled.com

Telephone

+48 71 757 50 67

